

# \$724,900 - 14 Vienna Close, Red Deer

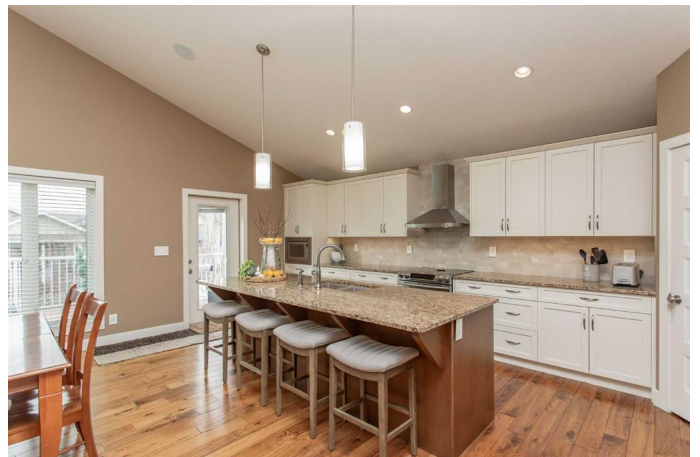
MLS® #A2212205

## \$724,900

5 Bedroom, 3.00 Bathroom, 1,889 sqft  
Residential on 0.13 Acres

Vanier East, Red Deer, Alberta

Step into this beautifully designed modified bi-level which offers the perfect blend of style, comfort and location. Surrounded by prestigious homes in a sought after neighborhood this property stands out in a stunning place to call home. Be welcomed in with the generous front landing which offers a seamless flow to both levels. The main area is an absolute show stopper which offers gleaming hardwood floors, soaring vaulted ceilings and a striking floor to ceiling two sided gas fireplace that adds warmth and wow factor. A spectacular kitchen design offers endless cabinetry countless storage drawers, full surround granite counters, massive center island with room for seating, deep corner pantry plus all matching stainless steel appliances. The back living room features a large window that floods the space with natural light creating a warm atmosphere. Two main level bedrooms on opposite sides fitting for separation, full four piece bath, linen closet plus convenient walk in laundry ideal for a step saver between floors. Follow upstairs to your Primary bedroom retreat. The generous bedroom size allows for King size furniture with plenty of walk around space. Two walk in closets and a spa inspired en suite that features heated tile floors, double vanity plus a separate tub and shower. The completed basement is well designed offering a generous family room perfect for hosting and entertaining. Two additional bedrooms perfect for the teenagers or extended guests to stay



over plus a full four piece bath. A massive storage room is an added bonus to keep all of your seasonal items organized and out of sight. Full mechanical package for the home is highlighted with tankless hot water system, high efficiency furnace, A/C, under floor heat, water softener and built in vac. The oversize double attached garage offers a rough in for gas furnace, catch basin drain plus plenty of room for cabinets or shelving. Enjoy the beautiful summer days to come on your large West facing deck. Gas line for bbq, extra space for the patio furniture plus full storage area underneath. Beautifully landscaped yard which is low maintenance plus offers an outdoor appeal with added privacy, small dog run and even backs onto a green belt for separation of homes. Step outside your door and be immediately connected to the neighborhood walking trails that tour you around the peaceful natural pond or link you to the endless city system. Live where beauty meets function and make this house your home for you.

Built in 2014

### **Essential Information**

|                |             |
|----------------|-------------|
| MLS® #         | A2212205    |
| Price          | \$724,900   |
| Bedrooms       | 5           |
| Bathrooms      | 3.00        |
| Full Baths     | 3           |
| Square Footage | 1,889       |
| Acres          | 0.13        |
| Year Built     | 2014        |
| Type           | Residential |
| Sub-Type       | Detached    |
| Style          | Bi-Level    |
| Status         | Active      |

### **Community Information**

|             |                 |
|-------------|-----------------|
| Address     | 14 Vienna Close |
| Subdivision | Vanier East     |
| City        | Red Deer        |
| County      | Red Deer        |
| Province    | Alberta         |
| Postal Code | T4R0P1          |

### **Amenities**

|                |                                                                 |
|----------------|-----------------------------------------------------------------|
| Parking Spaces | 4                                                               |
| Parking        | Double Garage Attached, Driveway, Garage Door Opener, Insulated |
| # of Garages   | 1                                                               |

### **Interior**

|                   |                                                                                                                                                            |
|-------------------|------------------------------------------------------------------------------------------------------------------------------------------------------------|
| Interior Features | Breakfast Bar, Central Vacuum, Closet Organizers, Granite Counters, High Ceilings, Kitchen Island, Pantry, Storage, Vinyl Windows                          |
| Appliances        | Central Air Conditioner, Dishwasher, Garage Control(s), Microwave, Range Hood, Refrigerator, Stove(s), Tankless Water Heater, Washer/Dryer, Water Softener |
| Heating           | In Floor, Fireplace(s), Forced Air, Natural Gas                                                                                                            |
| Cooling           | Central Air                                                                                                                                                |
| Fireplace         | Yes                                                                                                                                                        |
| # of Fireplaces   | 1                                                                                                                                                          |
| Fireplaces        | Double Sided, Gas, Living Room, Dining Room                                                                                                                |
| Has Basement      | Yes                                                                                                                                                        |
| Basement          | Finished, Full                                                                                                                                             |

### **Exterior**

|                   |                                                     |
|-------------------|-----------------------------------------------------|
| Exterior Features | Private Yard                                        |
| Lot Description   | Back Yard, Backs on to Park/Green Space, Landscaped |
| Roof              | Asphalt Shingle                                     |
| Construction      | Stone, Vinyl Siding                                 |
| Foundation        | Poured Concrete                                     |

### **Additional Information**

|                |                  |
|----------------|------------------|
| Date Listed    | April 23rd, 2025 |
| Days on Market | 22               |
| Zoning         | R1               |

### **Listing Details**

|                |                                    |
|----------------|------------------------------------|
| Listing Office | RE/MAX real estate central alberta |
|----------------|------------------------------------|

Data is supplied by Pillar 9â„¢ MLS® System. Pillar 9â„¢ is the owner of the copyright in its MLS® System. Data is deemed reliable but is not guaranteed accurate by Pillar 9â„¢. The trademarks MLS®, Multiple Listing Service® and the associated logos are owned by The Canadian Real Estate Association (CREA) and identify the quality of services provided by real estate professionals who are members of CREA. Used under license.