

\$20 - 360, 49 Hinshaw Drive, Sylvan Lake

MLS® #A2234081

\$20

0 Bedroom, 0.00 Bathroom,
Commercial on 0.00 Acres

Hewlett Park, Sylvan Lake, Alberta

Discover 1,500 sq. ft. of versatile commercial space situated at the high-traffic intersection of Highway 20 and Herder Drive. This sought-after location offers exceptional visibility and easy access—ideal for a wide range of business ventures. Act quickly to secure your spot .

Built in 2013

Essential Information

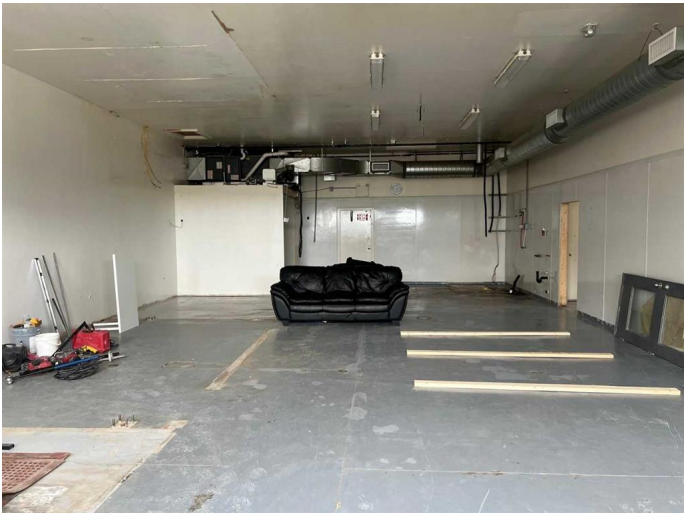
MLS® #	A2234081
Price	\$20
Bathrooms	0.00
Acres	0.00
Year Built	2013
Type	Commercial
Sub-Type	Business
Status	Active

Community Information

Address	360, 49 Hinshaw Drive
Subdivision	Hewlett Park
City	Sylvan Lake
County	Red Deer County
Province	Alberta
Postal Code	T4S0K5

Interior

Heating	Forced Air, Natural Gas
---------	-------------------------



Cooling

Central Air

Additional Information

Date Listed June 24th, 2025

Days on Market 39

Listing Details

Listing Office Royal LePage Network Realty Corp.

Data is supplied by Pillar 9â„¢ MLS® System. Pillar 9â„¢ is the owner of the copyright in its MLS® System. Data is deemed reliable but is not guaranteed accurate by Pillar 9â„¢. The trademarks MLS®, Multiple Listing Service® and the associated logos are owned by The Canadian Real Estate Association (CREA) and identify the quality of services provided by real estate professionals who are members of CREA. Used under license.